



Knapps Regis Tambourine-ET EX-94
Maternal Sister to Dam of Lot 1



Knapps Ace Tamera EX-93
Granddam of Lot 1

LOT 1 KNAPPS GRUMPY TIPSTER

USA000078004226

Born: 12-10-2014 Tattoo LE K965 RE K965
Breeder & Owner: KNAPP AUSTIN & LANDEN
EPWORTH IA
563-876-3834

Selling Open
Johnes Vaccinate

PA: -103M +0.02% -2F +0.04% +3P +167CM\$ +152NM\$
+0.7PTAT +1.2UDC +0.5FLC +1.3DPR +2.7PL +46PTI
ST SR BD DF RA TW RV RL FA
+0.6 -0.8 -0.7 +0.7 H0.2 -0.3 S0.4 P0.4 S0.6
FU RH RW UC UD TP TL
+0.9 +1.2 +0.4 +1.1 S1.6 C0.3 +0.4

MARODORE GOLIATHS RONALD-ET USA000000603218 1GU210

12/14 USDA PTA +27M +0.05% +9F -0.01% +0P
+3.2DPR +0.9PL +95NM\$ 41NM%ile +92CM\$ 97% Rel
AGA 12/14 PTAT -1.3 -0.8UDC -1.2FLC 95%Rel PTI -7

GOLDEN J OAK GRINCH USA000003070844

Appraisal: 90 @ 6-06 (90/90)
4-03 365D 2X 26240M 4.7% 1223F 3.2% 835P DHIA

GOLDEN J RONALD GRUMPY USA000000604960 7GU405

12/14 USDA PTA -53M +0.13% +19F +0.06% +8P
+1.2DPR +3.6PL +268NM\$ 87NM%ile +287CM\$ 94% Rel
AGA 12/14 PTAT +0.2 +1.2UDC +0.0FLC 94%Rel PTI +69
ST SR BD DF RA TW RV RL FA
-1.2 -1.3 -1.6 +0.4 H0.3 -0.8 S0.8 P0.3 S0.6
FU RH RW UC UD TP TL
+0.2 +0.6 +0.1 +1.4 S1.5 C1.3 -0.3

INDIAN ACRES PIES-ET USA000068024088 94GU958

12/14 USDA PTA -22M -0.04% -7F +0.03% +4P
+0.5DPR -0.2PL +7NM\$ 29NM%ile +16CM\$ 75% Rel
AGA 12/14 PTAT +0.9 +0.8UDC +2.6FLC 56%Rel PTI +50

KNAPPS PIES TRICKS-ET USA000078001467

PA: -152M -0.10% -23F +0.02% -2P +47CM\$ +36NM\$
+1.1PTAT +1.1UDC +1.0FLC +1.4DPR +1.7PL +20PTI
Appraisal: 86 @ 2-02 (87/87)
ST SR BD DF RA TW RV RL FA FU RH RW UC UD TP TL
42 24 32 37 40 24 37 37 28 29 45 24 29 40 24 22
2-02 305D 2X 17772M 4.7% 831F 3.4% 601P Proj. Act.

KNAPPS ACE TAMERA USA000068006299

12/14 USDA PTA -282M -0.16% -38F +0.01% -8P
+2.2DPR +3.6PL +64NM\$ 62NM%ile +78CM\$ 76% Rel
3 App 12/14 PTAT +1.3 +1.4UDR -0.7FLC 78%Rel CPI -11
Appraisal: 93 @ 9-07 (91/92)
2-07 365D 2X 19960M 4.7% 935F 3.4% 670P DHIA
3-08 365D 2X 24510M 4.3% 1044F 3.2% 786P DHIA
5-06 365D 2X 24830M 4.6% 1146F 3.3% 809P DHIA
2039D 108910M 4.4% 4805F 3.3% 3594P LIFE
KNAPPS MONTE TARA 87 @ 4-01 (90/77)
2-02 365D 2X 24760M 4.7% 1160F 3.2% 785P DHIA
KNAPPS REGIS TAMBOURINE-ET 94 @ 4-07 (95/91)
4-05 365D 2X 30700M 5.0% 1537F 3.1% 943P DHIA
KNAPPS REGIS TAMILLA-ET 90 @ 4-05 (90/90)
3-01 365D 2X 27950M 4.4% 1238F 3.5% 968P DHIA
KNAPPS REGIS TAMESTY-ET 90 @ 3-08 (91/87)
3-00 365D 2X 29690M 4.9% 1459F 3.4% 997P DHIA
KNAPPS AARON TAMIKA-ET 90 @ 3-11 (90/87)
2-00 365D 2X 25460M 4.6% 1181F 3.1% 794P DHIA
KNAPPS HILLPOINT REGIS TWEETIE-ET 93 @ 4-06 (93/92)
4-03 305D 2X 23640M 4.8% 1126F 3.2% 767P 96
KNAPPS HILLPOINT YOGI TWILIGHT-ET 84 @ 3-10 (83/86)
2-05 365D 2X 18980M 4.1% 785F 3.3% 617P DHIA
KNAPPS TANGO AT SPRINGHILL-ET 87 @ 3-04 (88/82)
2-02 314D 2X 15700M 4.5% 699F 3.2% 508P 101
KNAPPS RIPLEY FAME TAMARA-ET 80 @ 2-07 (83/74)
2-00 315D 3X 14370M 4.9% 697F 3.7% 531P 99
KNAPPS YOGI LUCY-ET 82 @ 3-09 (84/80)
2-06 340D 2X 18860M 5.2% 979F 3.2% 610P 41
KNAPPS TILLER TAMARIN-ET 85 @ 3-09 (86/82)
KNAPPS YOGI TAMELA-ET 86 @ 3-11 (83/88)
3-05 365D 2X 18240M 5.0% 913F 3.3% 606P DHIA
KNAPPS TILLER TAMAKO-ET 87 @ 4-08 (85/88)
2-00 305D 2X 15670M 4.6% 721F 3.1% 480P DHIA
KNAPPS LEWIS TAMAR-ET 90 @ 3-10 (91/85)
2-08 365D 2X 26340M 4.8% 1271F 3.3% 863P DHIA
KNAPPS FAYETTE TAMARIND-ET 91 @ 4-06 (92/90)
1-10 365D 2X 19740M 4.7% 932F 3.3% 649P DHIA

Additional Tamera daughters:

KNAPPS YOGI LILA-ET 86 @ 3-00 (88/83)
2-05 277D 2X 12720M 4.2% 530F 3.2% 406P 96
KNAPP MOZIER AARONS SECRET-ET 90 @ 4-01 (88/90)
2-05 365D 2X 29780M 4.5% 1342F 3.1% 922P DHIA
KNAPPS REGIS TANBARK-ET 90 @ 3-07 (91/88)
3-00 365D 2X 20280M 4.6% 937F 3.3% 675P DHIA
KNAPPS FAYETTE TAMBRAE-ET 90 @ 3-07 (92/90)
3-04 305D 2X 19260M 4.6% 885F 3.3% 638P 96
KNAPPS LES TIPTOP-ET 86 @ 3-01 (86/82)
2-08 365D 2X 24240M 4.7% 1129F 3.3% 799P DHIA
KNAPPS MOZIER AARONS SUNRISE-ET 86 @ 3-04 (86/77)
2-01 360D 2X 9890M 5.2% 514F 3.5% 348P 97
KNAPPS MENTOR TAM-ET 90 @ 3-03 (90/88)
1-11 337D 2X 17140M 4.8% 830F 3.4% 584P 96
KNAPPS HP MB MISSION TRISHA-ET 88 @ 3-01 (88/88)
2-06 308D 2X 15510M 4.0% 618F 3.3% 513P 92
KNAPPS HP FAME TOPEKA-ET 89 @ 2-10 (90/88)
KNAPPS HP MB FAME THUNDAR-ET 88 @ 2-07 (90/86)
KNAPPS FAME TOMORROW-ET 87 @ 2-09 (88/87)
2-01 333D 2X 15500M 5.1% 798F 3.5% 547P 95
KNAPPS MISSION TANGO-ET 86 @ 2-10 (86/87)
2-01 305D 2X 21670M 4.8% 1037F 3.0% 652P 95

3rd Dam: SUNRISE LUXURY TAMI USA000003068188

Appraisal: 93 @ 5-04 (92/92)
3-10 365D 2X 28480M 4.2% 1198F 3.2% 907P DHIA
2395D 151070M 4.0% 6087F 3.2% 4888P LIFE

LOT 2 MARODORE L. KING ADELYN**USA000068034347**

Born: 09-13-2014 Tag # 431
 Breeder & Owner: KOHLER SILAS J
 BALTIMORE OH
 740-808-0592 Lee

Selling Open

PA: +280M +0.05% +20F -0.01% +9P +180CM\$ +178NM\$
 +0.7PTAT +0.8UDC +1.5FLC -1.0DPR +2.1PL +74PTI
 ST SR BD DF RA TW RV RL FA
 +0.2 -0.1 -0.7 +0.5 H0.5 -0.3 H0.5 P0.3 S0.5
 FU RH RW UC UD TP TL
 +0.2 +0.3 +0.8 +1.0 S0.7 C1.0 -0.2

MARODORE AARONS LION KING USA000068048174

PA: +504M +0.10% +38F +0.00% +17P +202CM\$ +202NM\$
 +1.2PTAT +1.3UDC +1.9FLC -1.5DPR +0.5PL +117PTI
 ST SR BD DF RA TW RV RL FA
 +0.9 +0.1 -0.4 +1.7 L0.1 +0.1 H0.5 0.0 S0.9
 FU RH RW UC UD TP TL
 -0.1 +0.9 +1.8 +2.0 S0.2 C2.2 +0.3

BEUNA VISTA CARTERS ABBY USA000068045432

12/14 USDA PTA +56M +0.00% +2F -0.01% +1P
 -0.4DPR +3.6PL +154NM\$ 83NM%ile +158CM\$ 43% Rel
 2 App 12/14 PTAT +0.2 +0.3UDR +1.0FLC 49%Rel CPI +31
 Appraisal: 84 @ 3-00 (83/84)
 ST SR BD DF RA TW RV RL FA FU RH RW UC UD TP TL
 17 26 24 33 32 17 29 24 32 27 36 35 30 25 14 32
 1-11 354D 2X 13210M 4.7% 626F 3.5% 458P 95
 2-11 305D 2X 17882M 4.5% 799F 3.5% 631P Proj. Act.

SNIDERS OPTION AARON-ET USA000000604670 7GU395

12/14 USDA PTA +288M +0.17% +41F +0.00% +9P
 -2.9DPR -0.5PL +159NM\$ 62NM%ile +163CM\$ 98% Rel
 AGA 12/14 PTAT +1.4 +1.3UDC +2.2FLC 97%Rel PTI +96

MARODORE GRUMPY LIONESS USA000068031066

Appraisal: 90 @ 3-00 (90/90)
 2-11 365D 2X 27470M 4.6% 1264F 3.4% 921P DHIA

RIPLEY FARMS MR A CARTER-ET USA000068027217 31GU623

12/14 USDA PTA -102M +0.16% +21F +0.02% +0P
 +0.0DPR +2.9PL +192NM\$ 66NM%ile +205CM\$ 82% Rel
 AGA 12/14 PTAT +0.3 +0.5UDC +1.4FLC 79%Rel PTI +56

GR-BEUNA VISTA AMY USA000068023035

12/14 USDA PTA +308M -0.11% -4F -0.02% +6P
 -0.8DPR +1.3PL +50NM\$ 58NM%ile +48CM\$ 46% Rel
 4 App 12/14 PTAT +0.0 -0.3UDR +1.1FLC 56%Rel CPI +20
 Appraisal: 90 @ 5-06 (90/90)
 1-11 365D 2X 13120M 3.9% 512F 3.0% 395P DHIA
 3-01 307D 2X 12560M 4.2% 525F 3.2% 398P 98

3rd Dam: PR-COUNTRY LANE RIVER MAGIC SHIRL USA0376011036

Appraisal: 91 @ 10-05 (91/92)
 4-07 362D 2X 16850M 4.0% 679F 3.4% 565P 94

**Knapps HP Fame Topeka-ET**

All-American & Jr. AA Sr. 2-year-old 2014
 Maternal Sister to Dam of Lot 1

**Knapps Hillpoint Regis Tweetie-ET EX-93**

Jr. All-American 4-year-old 2014
 Maternal Sister to Dam of Lot 1

**Marshdene Magic Mary EX-94**

6X All-American Nominee
 3rd Dam of Lot 3

**Adams Creek Hillpoint Marsha EX-94**

3X All-American 2011, 2012, 2013
 Maternal Sister to Granddam of Lot 3



Chupps Farm Mentor Mary-ET EX-91

All-American 5-year-old 2012

Dam of Lot 3

LOT 3 NICLEY LIVESTOCK FAME x MARY-ET PENDING

Born: 6-23-2014

Breeder: NICLEY LIVESTOCK

LEBANON IN

Owner: NICLEY E & KENDRA+TORMOEHLEN L+POTTER BR

LEBANON IN

317-919-1459

PA: -226M +0.04% -5F +0.05% +0P -15CM\$ -24NM\$

+1.4PTAT +1.2UDC +2.8FLC -1.3DPR +0.4PL +50PTI

ST SR BD DF RA TW RV RL FA

+3.3 +1.4 +1.7 +0.9 H0.1 +1.8 H1.0 P0.3 S1.1

FU RH RW UC UD TP TL

+1.4 +1.2 +0.8 +0.5 S1.6 C0.8 +0.1

MILLBORNE TILLER FAYES FAME USA000068008443 91GU4843

12/14 USDA PTA -77M -0.06% -14F +0.02% +0P

-2.9DPR -1.8PL -138NM\$ 8NM%ile -142CM\$ 82% Rel

AGA 12/14 PTAT +2.2 +1.9UDC +4.5FLC 77%Rel PTI +56

ST SR BD DF RA TW RV RL FA

+3.6 +1.4 +2.2 +2.0 H0.3 +2.3 H1.4 P0.8 S1.7

FU RH RW UC UD TP TL

+2.2 +2.3 +1.5 +0.6 S1.8 C1.9 -0.3

CHUPPS FARM MENTOR MARY-ET USA000068014076

12/14 USDA PTA -374M +0.13% +4F +0.08% +0P

+0.4DPR +2.5PL +91NM\$ 69NM%ile +112CM\$ 48% Rel

1 App 12/14 PTAT +0.5 +0.5UDR +1.1FLC 50%Rel CPI +43

Appraisal: 91 @ 6-05 (90/90)

ST SR BD DF RA TW RV RL FA FU RH RW UC UD TP TL

38 45 43 20 27 47 37 32 21 24 32 33 29 28 33 32

2-06 326D 2X 14570M 5.0% 728F 3.3% 478P DHIA

5-03 365D 2X 23310M 5.0% 1165F 3.5% 811P DHIA

All-American 5-Year-Old 2012

HM All-American Sr. 2-Year-Old 2009

1st Aged Cow NJS-Louisville 2014

4th Aged Cow NGS-Louisville 2014

Nom. All-American Produce of Dam 2009

Res. Grand Champion NGS-Madison 2012

CHUPPS FARM AGENDA MARVELOUS 81 @ 3-10 (80/81)

2-00 305D 2X 9220M 4.0% 371F 5.1% 469P 79

3rd Dam: MARSHDENE MAGIC MARY USA000003067681

Appraisal: 94 @ 8-09 (94/94)

6-06 305D 2X 25380M 5.6% 1430F 3.5% 880P 100

3142D 164,120M 5.2% 8,477F 3.7% 6,021P LIFE

All-American 4-Year-Old 2004

HM All-American 5-Year-Old 2005

Res. All-American Aged Cow 2006 & 2007

Res. All-American Total Performance Cow 2007

Nom. All-American Aged Cow & Total Performance Cow 2008

HM All-American Spring Calf 2000

4th Spring Yearling NGS-Madison 2001

Res. Sr. Champion NGS-Louisville 2004

Grand Champion WI State Show 2005



Chupps Hillpoint Pie Mariah-ET EX-92

Reserve All-American 4-year-old 2014

Maternal Sister to Dam of Lot 3

Selling Open

TROTACRE LORAL TILLER-ET USA000000603341 7GU360

12/14 USDA PTA +225M -0.01% +8F -0.04% +1P

-3.8DPR -4.1PL -191NM\$ 8NM%ile -209CM\$ 99% Rel

AGA 12/14 PTAT +1.5 +0.5UDC +1.6FLC 98%Rel PTI +16

R WAY ROYAL OAK FAYE USA0000003068719

Appraisal: 94 @ 4-03 (94/91)

4-00 365D 2X 19590M 4.6% 892F 3.5% 688P DHIA

MAR RAL ROYAL MENTOR USA000000604702 31GU612

12/14 USDA PTA -358M -0.01% -17F +0.04% -5P

-1.0DPR +0.4PL -100NM\$ 8NM%ile -95CM\$ 95% Rel

AGA 12/14 PTAT +0.9 +0.6UDC +1.7FLC 95%Rel PTI +8

CHUPPS FARM ACE MARIA-ET USA0000003081197

12/14 USDA PTA -428M +0.11% -2F +0.06% -4P

+1.2DPR +2.8PL +117NM\$ 76NM%ile +142CM\$ 58% Rel

1 App 12/14 PTAT +0.3 +0.6UDR +0.7FLC 64%Rel CPI +26

Appraisal: 84 @ 5-04 (84/77)

4-07 305D 2X 11960M 5.0% 593F 3.6% 430P 92

CHUPPS HILLPOINT PIE MARIAH-ET 92 @ 4-05 (93/90)

2-04 305D 2X 15440M 3.9% 598F 3.0% 468P 96

Res. All-American 4-year-old 2014

HM All-American Total Performance Cow 2014

All-American Jr. 2-Year-Old 2012

Int. Champion NGS-Madison 2012

Nom. All-American Spring Calf 2010

CHUPPS HILLPOINT MENT MARLA-ET 92 @ 6-05 (91/90)

3-10 351D 2X 23970M 5.0% 1193F 3.5% 832P 97

HM All-American Milking Yearling 2010

CHUPPS FARM ILLIAD MISSY 82 @ 3-05 (80/84)

2-02 305D 2X 15730M 4.6% 725F 3.5% 543P 97

Dam of All-American Summer Yearling 2010

CHUPPS FARM MENTOR MARCEY-ET 90 @ 5-04 (91/86)

4-01 323D 2X 22970M 3.9% 897F 3.3% 757P 98

CHUPPS HILLPOINT PERFECT MARVEL-ET 80 @ 2-08 (82/84)

2-01 365D 2X 13850M 4.1% 573F 3.0% 422P DHIA

CHUPPS HILLPOINT MONEY MAPLE-ET 85 @ 4-08 (85/85)

4-07 275D 3X 17870M 5.0% 893F 3.6% 640P 90

CHUPPS FARM MONEY MACKENZI-ET 74 @ 2-08 (72/77)

CHUPPS HILLPOINT PIE MADISON-ET 85 @ 3-04 (85/87)

3-00 311D 2X 10920M 4.7% 511F 3.4% 366P 89



Triple J Lone Star Marlee VG-87
 HM All-American Spring Yearling 2013
 Dam of Lot 4

LOT 4 TRIPLE J SPRING STAR MERICA USA000068032789

Born: 06-02-2014 Tag # 383
 Breeder: TRIPLE J-RHODES B&N+MCLEAN K&O&M
 SALEM OH
 Owner: SPRINGHILL - STARMARK
 BIG PRAIRIE OH
 330-473-9660

Selling Open

COULEE CREST LUXURY SKIPPER-ET USA000000604230 200GU108

12/14 USDA PTA -70M -0.06% -14F +0.00% -3P
 +0.7DPR -2.4PL -172NM\$ 8NM%ile -185CM\$ 95% Rel
 AGA 12/14 PTAT +0.3 +0.3UDC -2.5FLC 92%Rel PTI -46

GOLDEN J OAK GRINCH USA000003070844

Appraisal: 90 @ 6-06 (90/90)
 4-03 365D 2X 26240M 4.7% 1223F 3.2% 835P DHIA

SPRINGHILL J LONE STAR-ET USA000068030411 31GU624

12/14 USDA PTA +290M +0.09% +28F +0.07% +21P
 -1.3DPR -1.2PL +119NM\$ 45NM%ile +137CM\$ 73% Rel
 AGA 12/14 PTAT +1.4 +1.1UDC +2.2FLC 65%Rel PTI +116

TRIPLE J DELTA MILAH USA000068028582

12/14 USDA PTA -326M +0.16% +11F +0.03% -6P
 -0.1DPR -0.7PL -47NM\$ 30NM%ile -45CM\$ 47% Rel
 2-04 305D 2X 16850M 4.8% 817F 3.3% 551P 96
 3-08 270D 2X 15420M 5.0% 773F 3.6% 560P 97

3rd Dam: MAR L BANGER MARIAM USA000068009618

Appraisal: 87 @ 2-11 (86/90)
 3-11 305D 2X 23160M 4.2% 972F 3.1% 729P 96

PA: +361M -0.01% +15F +0.00% +12P +4CM\$ +6NM\$
 +0.8PTAT +0.5UDC +0.2FLC -1.0DPR -1.7PL +47PTI
 ST SR BD DF RA TW RV RL FA
 +3.0 +0.7 +1.3 +2.1 L1.7 +1.3 H0.3 P0.1 L0.2
 FU RH RW UC UD TP TL
 -0.1 +1.4 +1.2 -0.2 D0.1 C1.3 -0.7

GOLDEN J SKIPPER GARY USA000068013855 7GU428

12/14 USDA PTA +576M -0.12% +5F -0.02% +16P
 -1.3DPR -2.0PL -25NM\$ 20NM%ile -32CM\$ 83% Rel
 AGA 12/14 PTAT +0.6 +0.5UDC -1.1FLC 78%Rel PTI +26
 ST SR BD DF RA TW RV RL FA
 +2.1 +0.2 +1.1 +2.5 L2.2 +1.0 S0.2 S0.8 L0.4
 FU RH RW UC UD TP TL
 +0.2 +1.0 +1.1 -0.5 0.0 C1.5 -2.2

TRIPLE J LONE STAR MARLEE USA000068048139

12/14 USDA PTA +145M +0.11% +24F +0.02% +8P
 -0.6DPR -1.3PL +37NM\$ 54NM%ile +39CM\$ 41% Rel
 1 App 12/14 PTAT +0.9 +0.5UDR +1.4FLC 37%Rel CPI +67
 Appraisal: 87 @ 2-06 (87/90)
 ST SR BD DF RA TW RV RL FA FU RH RW UC UD TP TL
 47 22 25 36 25 25 40 22 25 24 36 30 23 36 34 30
 2-01 305D 2X 20418M 4.8% 978F 3.2% 654P Proj Act.
 HM All-American Spring Yearling 2013
 1st Spring Yearling NGS-Louisville 2013
 5th Spring Yearling NGS-Harrisburg 2013



Coulee Crest Nick Lorilyn
 3-05 365D 42,440M* 5.3% 2,254F* 3.1% 1,298P*
 Dam of Lot 5

LOT 5 COULEE CREST JUDGEMENT LIVIA-ET USA000078002939

Born: 07-12-2014 Tattoo LE P627
 Breeder & Owner: COULEE CREST LLC
 CASHTON WI
 608-633-2321

Selling Open
 Johnes Vaccinate

#4 ranked PA CPI heifer in the breed!

PA: +467M +0.18% +51F +0.01% +17P +260CM\$ +255NM\$
 +1.5PTAT +1.2UDC +2.0FLC -1.5DPR +0.5PL +137PTI
 ST SR BD DF RA TW RV RL FA
 +1.1 +1.0 +1.2 +1.5 L0.3 +0.8 H0.9 P0.7 S0.5
 FU RH RW UC UD TP TL
 +0.4 +1.2 +2.1 +1.5 D0.3 C2.4 -0.9

SPRINGHILL JUDGMENT-ET USA000068030403 200GU118
 12/14 USDA PTA -384M +0.22% +18F +0.03% -7P
 -0.9DPR +1.3PL +121NM\$ 50NM%ile +132CM\$ 81% Rel
 AGA 12/14 PTAT +1.4 +1.8UDC +2.2FLC 74%Rel PTI +62
 ST SR BD DF RA TW RV RL FA
 +0.2 +0.2 -0.3 +0.7 H1.3 -0.2 H0.5 P0.8 S0.9
 FU RH RW UC UD TP TL
 +1.2 +1.1 +1.1 +1.4 S1.5 C2.6 -1.0

COULEE CREST NICK LORILYN USA000068023988
 12/14 USDA PTA +1318M +0.14% +84F -0.02% +40P
 -2.0DPR -0.4PL +388NM\$ 99NM%ile +388CM\$ 60% Rel
 3 App 12/14 PTAT +1.6 +0.6UDR +1.8FLC 59%Rel CPI +210
 Appraisal: 91 @ 5-00 (90/91)
 ST SR BD DF RA TW RV RL FA FU RH RW UC UD TP TL
 41 49 50 48 34 46 38 20 32 22 45 50 38 11 45 20
 1-11 365D 3X 32060M*5.1% 1624F*3.2% 1010P* DHIA
 3-05 365D 3X 42440M*5.3% 2254F*3.1% 1298P* DHIA
 1168D 107900M 5.3% 5707F 3.3% 3533P LIFE

Former #1 CPI Cow!
 COULEE CREST GRUMPY LEGEND-ET @ SELECT SIRE
 COULEE CREST BLUE SPRUCE LAKODA @ ACCELERATED
 COULEE CREST GARY LUCKY-ET 77 @ 2-02 (80/82)
 COULEE CREST AP LORILEE 90 @ 4-00 (91/90)
 2-10 365D 3X 41180M*4.7% 1945F*3.5% 1425P* DHIA
Former #1 CPI Cow!
 Dam of Coulee Crest Conqueror Logo @ Genex/CRI
 and Coulee Crest Fame Latimer @ Taurus
 COULEE CREST ADACKA LACIE-ET
 2-01 253D 2X 20780M 3.7% 763F 3.0% 623P 80
 COULEE CREST ADACKA LAINEY-ET 83 @ 2-02 (82/85)
 1-11 365D 3X 27060M 5.8% 1558F*3.4% 921P DHIA
#9 on December 2014 CPI List
 COULEE CREST ADACKA LACE-ET
 1-11 255D 3X 16580M 5.1% 847F 3.3% 544P 89
 COULEE CREST GEO LAUREN-ET 84 @ 2-06 (85/84)
 2-03 365D 3X 23730M 6.1% 1438F 3.5% 829P DHIA
#10 on December 2014 CPI List
 COULEE CREST GEO LARA-ET 78 @ 2-09 (77/78)

SNIDERS OPTION AARON-ET USA00000604670 7GU395
 12/14 USDA PTA +288M +0.17% +41F +0.00% +9P
 -2.9DPR -0.5PL +159NM\$ 62NM%ile +163CM\$ 98% Rel
 AGA 12/14 PTAT +1.4 +1.3UDC +2.2FLC 97%Rel PTI +96

DIX LEE TILLER JOKE USA000068001932
 Appraisal: 93 @ 5-08 (93/92)
 5-06 365D 2X 31350M 4.9% 1543F 3.3% 1033P DHIA

LANG HAVEN TILLER NICK-ET USA000068009162 14GU310
 12/14 USDA PTA +494M +0.02% +25F -0.02% +13P
 -2.8DPR -5.5PL -112NM\$ 8NM%ile -117CM\$ 90% Rel
 AGA 12/14 PTAT +1.2 +0.0UDC +0.6FLC 85%Rel PTI +42

FLAMBEAU MANOR DECISION LORI-ET USA000068012709
 12/14 USDA PTA +996M +0.12% +66F -0.05% +24P
 -0.8DPR +1.8PL +362NM\$ 98NM%ile +353CM\$ 59% Rel
 2 App 12/14 PTAT +0.7 +0.6UDR +1.2FLC 57%Rel CPI +153
 Appraisal: 90 @ 8-02 (88/90)
 Gold Star Dam - 2013
 2-00 305D 3X 24725M 5.7% 1403F 3.0% 749P HIA
 3-09 365D 3X 44250M*5.9% 2600F*3.0% 1313P* 94
 6-10 365D 3X 26920M 5.6% 1497F 2.8% 766P DHIA
 1952D 165390M 5.5% 9151F 3.2% 5356P LIFE
#3 on December 2014 CPI List
 COULEE CREST NICK LINWOOD-ET @ ACCELERATED
 COULEE CREST GARY LORI-ET 82 @ 2-01 (82/78)
 COULEE CREST PRADA LATASHA-ET 84 @ 2-02 (86/83)

3rd Dam: FLAMBEAU MANOR ENHANCER LANA USA000003043629
 Appraisal: 92 @ 7-11 (90/90) Gold Star Dam - 2001
 5-10 365D 2X 30271M 5.4% 1645F 3.2% 968P DHIA
 1980D 130421M 4.9% 6454F 3.3% 4293P LIFE

4th Dam: FLAMBEAU MANOR VOL LAURA USA000003022186
 Appraisal: 90 @ 4-07
 4-02 305D 2X 18260M 4.2% 765F 3.7% 680P DHIA

5th Dam: FLAMBEAU MANOR LESLIE USA000002947026
 Appraisal: 90 @ 3-08 Gold Star Dam - 1992
 3-05 308D 2X 17320M 4.3% 738F 3.8% 655P DHIA

6th Dam: FLAMBEAU MANOR LAUREL USA000002861817
 Appraisal: 80 @ 9-04 Gold Star Dam - 1992
 6-01 357D 2X 21600M 4.5% 974F 3.7% 792P DHIA
 2787D 151840M 4.5% 6790F 3.6% 5507P LIFE



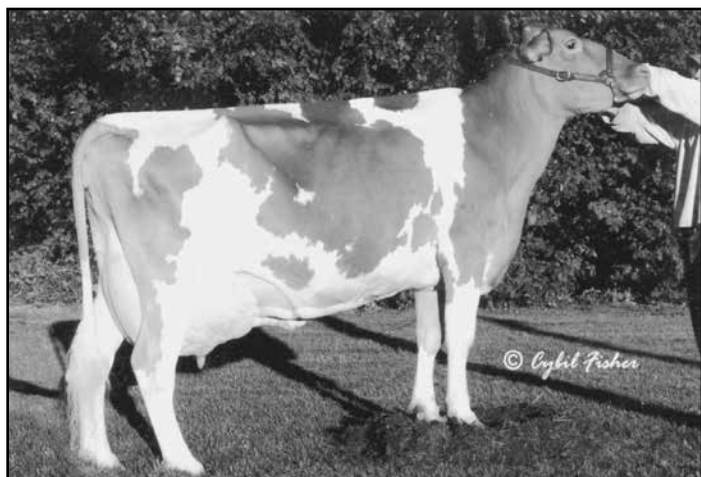
Coulee Crest AP Lorilee EX-90

2-10 365D 3X 41,180M* 4.7% 1,945F* 3.5% 1,425P*
3rd generation 40,000M cow!!
Maternal Sister to Lot 5



Flambeau Manor Decision Lori EX-90

3-09 365D 44,250M* 5.9% 2,600F* 3.0% 1,313P*
Granddam of Lot 5



Flambeau Manor Enhancer Lana EX-92

5-10 365D 30,271M 5.4% 1,645F 3.2% 968P
3rd Dam of Lot 5



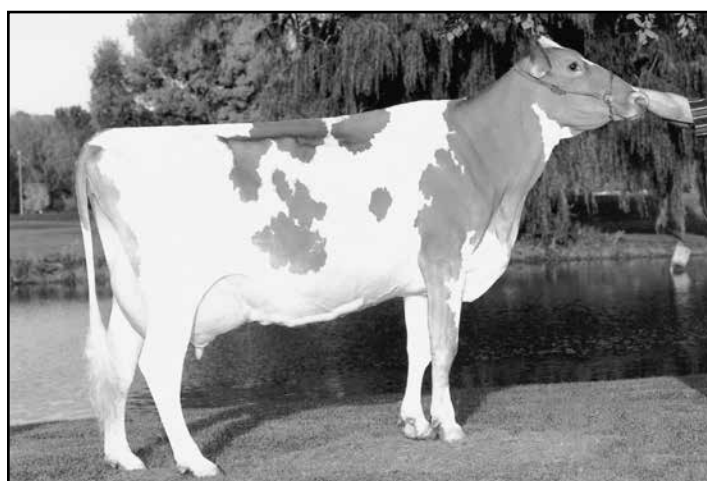
Coulee Crest AP Lexi-ET

HM All-American Spring Yearling 2014
All-American Spring Calf 2013
Maternal Sister to Lot 5



Rae Mar Regis Lindy-ET EX-90

4-09 365D 20,910M 3.0% 619F 2.9% 612P
Maternal Family Member of Lot 6



Knapps Fayette Lady EX-93

3-08 365D 21,840M 4.9% 1,081F 3.7% 809P
Maternal Family Member of Lot 6



Rae Mar Fayettes Lily EX-92
 Res. All-American Sr. 2-year-old 2004
 Maternal Family Member of Lot 6

LOT 6 ADAMS CREEK MAXIM LINEA

USA000078004386

Born: 06-20-2014 Tattoo LE N882
 Breeder & Owner: NUTTLEMAN ALYSSA & KATE
 BANGOR WI
 608-386-8803

Selling Open

ADAMS CREEK AARON MAXIM-ET USA000068045565 107GU1423

PA: -87M +0.18% +26F +0.04% +4P +102CM\$ +89NM\$
 +0.9PTAT +0.8UDC +1.1FLC -1.2DPR -0.4PL +60PTI
 ST SR BD DF RA TW RV RL FA
 +2.1 +0.8 +0.4 +0.5 L0.4 +1.0 H0.3 S0.8 S0.7
 FU RH RW UC UD TP TL
 +0.6 +0.6 +0.6 +0.4 S1.1 C0.5 -0.5

ADAMS CREEK KRINGLE LAURA USA000068029991

12/14 USDA PTA -787M +0.16% -10F +0.00% -25P
 -0.8DPR -1.6PL -205NM\$ 5NM%ile -207CM\$ 45% Rel
 3 App 12/14 PTAT +0.1 -0.3UDR -0.7FLC 51%Rel CPI -85
 Appraisal: 87 @ 4-04 (87/91)
 ST SR BD DF RA TW RV RL FA FU RH RW UC UD TP TL
 31 25 31 33 36 22 45 25 30 26 33 35 28 25 20 39
 2-02 321D 2X 14220M 5.0% 708F 3.3% 470P 101
 3-03 300D 2X 13580M 5.1% 686F 3.3% 449P 102
 4-02 305D 2X 15086M 4.8% 731F 3.4% 508P Proj Act.

SNIDERS OPTION AARON-ET USA000000604670 7GU395

12/14 USDA PTA +288M +0.17% +41F +0.00% +9P
 -2.9DPR -0.5PL +159NM\$ 62NM%ile +163CM\$ 98% Rel
 AGA 12/14 PTAT +1.4 +1.3UDC +2.2FLC 97%Rel PTI +96

MARSHDENE MAGIC MARY USA000003067681

Appraisal: 94 @ 8-09 (94/94)
 6-06 305D 2X 25380M 5.6% 1430F 3.5% 880P 100

CHUPPS HILLPOINT GDUST KRINGLE-ETUSA 00068019860 31GU622

12/14 USDA PTA -1087M +0.31% -1F +0.04% -29P
 -2.1DPR -5.4PL -344NM\$ 0NM%ile -344CM\$ 82% Rel
 AGA 12/14 PTAT +0.9 -0.3UDC +0.1FLC 76%Rel PTI -89

RAE MAR DEEMANDS LILDEE USA000068022436

12/14 USDA PTA -546M +0.07% -13F +0.01% -16P
 -0.2DPR +1.0PL -88NM\$ 20NM%ile -84CM\$ 52% Rel
 3 App 12/14 PTAT +0.0 +0.0UDR -0.7FLC 56%Rel CPI -51
 Appraisal: 86 @ 5-02 (86/80)
 1-11 305D 2X 15000M 4.6% 696F 3.3% 496P 101
 3-08 329D 2X 18730M 4.7% 878F 3.2% 603P 102
 4-08 294D 2X 16240M 5.0% 814F 3.1% 501P 102
 ADAMS CREEK MITCHELL LANIE 85 @ 2-08 (83/87)
 2-00 305D 3X 18250M 5.2% 953F 3.4% 624P 93



Sunrise TT Jessica EX-90
 4-04 365D 23,280M 4.6% 1,082F 3.3% 771P
 Reserve Jr. All-American Jr. 2-year-old 2007
 3rd Dam of Lot 7

LOT 7 SPRINGHILL JARRAD MOLLY USA000068034268

Born: 10-17-2014 Tag # 421
 Breeder & Owner: SPRINGHILL
 CHRIS LANG
 BIG PRAIRIE OH
 330-473-9660

Selling Open

PA: -162M -0.01% -9F +0.01% -5P -32CM\$ -30NM\$
 +0.8PTAT +0.9UDC +0.7FLC +0.1DPR +0.7PL +12PTI
 ST SR BD DF RA TW RV RL FA
 +1.2 +0.9 +0.8 -0.3 L0.4 +0.9 H0.2 P0.5 S0.2
 FU RH RW UC UD TP TL
 +1.0 +0.6 +0.5 +0.9 S1.1 C0.3 +0.7

SPRINGHILL MENTOR JARRAD-ET USA000068031554

PA: -118M +0.04% +1F +0.03% +0P +1CM\$ -2NM\$
 +1.3PTAT +1.0UDC +2.0FLC -0.3DPR +0.2PL +50PTI
 ST SR BD DF RA TW RV RL FA
 +2.7 +1.5 +1.2 -0.2 L0.4 +1.6 H0.9 P0.7 S0.5
 FU RH RW UC UD TP TL
 +1.2 +0.8 +0.7 +0.7 S1.4 C0.4 +1.1

CHUPPS SPRINGHILL MARY JANE USA000068031547

MAR RAL ROYAL MENTOR USA00000604702 31GU612

12/14 USDA PTA -358M -0.01% -17F +0.04% -5P
 -1.0DPR +0.4PL -100NM\$ 8NM%ile -95CM\$ 95% Rel
 AGA 12/14 PTAT +0.9 +0.6UDC +1.7FLC 95%Rel PTI +8

DIX LEE TILLER JOKE USA000068001932

Appraisal: 93 @ 5-08 (93/92)
 5-06 365D 2X 31350M 4.9% 1543F 3.3% 1033P DHIA

CHUPPS FARM DYNASTY HILLBILLY USA000068044565 109GU10

MOLEHILL NICLEY H JAN USA000068025073

12/14 USDA PTA -321M -0.05% -22F +0.00% -11P
 +1.0DPR +0.6PL -104NM\$ 17NM%ile -112CM\$ 43% Rel
 3 App 12/14 PTAT +0.1 +0.6UDR -1.2FLC 47%Rel CPI -44
 Appraisal: 86 @ 5-05 (86/80)
 2-08 365D 2X 14650M 4.4% 640F 3.3% 477P DHIA
 4-02 343D 2X 16070M 4.9% 794F 3.5% 558P 102
 5-03 365D 2X 20510M 4.7% 956F 3.3% 667P DHIA

3rd Dam: SUNRISE TT JESSICA USA000068005103

Appraisal: 90 @ 5-01 (90/86)
 4-04 365D 2X 23280M 4.6% 1082F 3.3% 771P DHIA
 Nominated Jr. All-American 4-year-old 2009
 Nominated Jr. All-American Jr. 3-year-old 2008
 Reserve Jr. All-American Jr. 2-year-old 2007
 Nominated All-American Jr. 2-year-old 2007

4th Dam: SUNRISE NITRO PEACHES USA000003076848

Appraisal: 88 @ 5-07 (85/85)
 4-00 305D 2X 15200M 5.1% 770F 3.4% 516P 99

5th Dam: ROUND POND PK LORINE USA000003047176

Appraisal: 84 @ 8-02 (82/83)
 5-05 305D 2X 15450M 4.5% 697F 3.2% 498P DHIA



Sniders Fayettes Danzy VG-86
 Res. Jr. All-American Winter Calf 2000
 Res. Jr. All-American Winter Yearling 2001
 HM All-American Winter Calf 2000
 Maternal Family Member of Lot 8

LOT 8 SNIDERS ARRINGTON DELILA USA000068038083

Born: 12-21-2012 Tattoo LE S434 RE S434
 Breeder & Owner: GABLE AARON
 NEW ENTERPRISE PA
 814-766-3272

Pasture Bred Due after 3-20-15 to
 Maplehurst Golden Ben 78000352

PA: -603M +0.07% -17F +0.06% -11P -87CM\$ -96NM\$
 -0.7PTAT -0.3UDC -1.6FLC +1.3DPR +0.3PL -61PTI
 ST SR BD DF RA TW RV RL FA
 -0.5 -0.1 -1.0 -1.8 H0.2 -0.3 S0.7 S0.6 L0.4
 FU RH RW UC UD TP TL
 +0.3 -0.9 -1.6 -1.1 S0.5 W0.1 -1.5

CHUPPS FARM BOSSMAN MONEY-ET USA000000604440
 12/14 USDA PTA -636M +0.04% -22F +0.04% -15P
 +1.4DPR -3.6PL -273NM\$ 8NM%ile -272CM\$ 78% Rel
 AGA 12/14 PTAT -1.0 -0.7UDC -2.5FLC 74%Rel PTI -105

SNIDERS OMNI AEROLIN USA000003069219
 Appraisal: 93 @ 8-06 (93/89)
 8-03 365D 2X 24440M 4.4% 1076F 3.3% 805P DHIA

SNIDERS MONEY ARRINGTON USA000068025575
 12/14 USDA PTA -659M +0.13% -9F +0.04% -15P
 +1.6DPR +0.4PL -91NM\$ 12NM%ile -89CM\$ 59% Rel
 AGA 12/14 PTAT -0.8 -0.6UDC -2.1FLC 57%Rel PTI -69
 ST SR BD DF RA TW RV RL FA
 -1.6 -0.6 -1.5 -2.0 H1.8 -1.1 S0.9 S0.2 L0.6
 FU RH RW UC UD TP TL
 +0.1 -0.9 -1.8 -2.0 S0.4 W0.1 -2.4

SNIDERS LORAL ARCHIE USA000000604762 76GU804
 12/14 USDA PTA -827M +0.15% -13F +0.12% -9P
 -0.5DPR -0.3PL -139NM\$ 8NM%ile -125CM\$ 92% Rel
 AGA 12/14 PTAT +0.6 +1.2UDC -0.2FLC 88%Rel PTI -16

SNIDERS HICKORY DANZLER USA000003070146
 12/14 USDA PTA -430M -0.01% -21F +0.08% -2P
 +2.6DPR +0.1PL -42NM\$ 31NM%ile -17CM\$ 55% Rel
 2 App 12/14 PTAT -1.8 -1.9UDR -0.8FLC 58%Rel CPI -61
 Appraisal: 79 @ 4-07 (76/83)

SNIDERS ARCHIE DANZY USA000068021545
 12/14 USDA PTA -546M +0.00% -24F +0.07% -6P
 +1.0DPR +0.2PL -100NM\$ 18NM%ile -84CM\$ 50% Rel
 3 App 12/14 PTAT -0.6 +0.0UDR -1.1FLC 54%Rel CPI -48
 Appraisal: 83 @ 4-09 (84/76)
 ST SR BD DF RA TW RV RL FA FU RH RW UC UD TP TL
 36 27 18 22 42 28 34 33 21 18 33 29 23 29 29 24
 2-01 356D 2X 15570M 4.3% 663F 3.3% 513P 95
 3-03 365D 2X 21450M 4.0% 866F 3.4% 738P DHIA
 4-08 313D 2X 20410M 3.8% 768F 3.4% 691P 97
 5-09 325D 2X 17510M 3.8% 674F 3.3% 586P 95

2-04 286D 2X 16150M 4.0% 642F 3.2% 520P 94
 3-02 306D 2X 16460M 4.3% 703F 3.5% 583P 91
 4-02 294D 2X 19350M 4.1% 788F 3.5% 669P 94
 5-01 332D 2X 22010M 4.1% 898F 3.4% 757P 93
 6-03 311D 2X 20440M 3.9% 807F 3.2% 652P 94
 7-04 325D 2X 20020M 3.6% 730F 3.4% 678P 98
 1854D 114430M 4.0% 4568F 3.4% 3859P LIFE
 SNIDERS BUNKER DORSEY 84 @ 5-08 (82/83)
 6-07 365D 2X 21690M 4.3% 943F 3.6% 781P DHIA
 SNIDERS GARRETT DINAH 90 @ 5-00 (90/88)
 4-05 365D 2X 25140M 4.3% 1087F 3.4% 864P 97

3rd Dam: SNIDERS MAGIC DEION USA000003032757
 Appraisal: 86 @ 5-01
 7-09 354D 2X 17350M 4.2% 728F 3.5% 601P 94
 2530D 115450M 4.7% 5374F 3.7% 4278P LIFE

4th Dam: SNIDERS HERCULES DENA USA000002869000
 Appraisal: 80 @ 4-07
 10-08 305D 2X 15320M 5.0% 759F 4.1% 629P DHIR
 3403D 146610M 5.0% 7386F 4.0% 5844P LIFE

5th Dam: SNIDERS DASHERS DELAINE USA000002819999
 Appraisal: 90 @ 4-03



Pinebreeze Telestar Andora EX-95

Knapps Perfecto Adora EX-90

6-05 365D 26,740M 4.7% 1,261F 3.0% 811P
6th Dam of Lot 9

5-02 365D 40,848M 4.5% 1,853F 3.4% 1,398P
Maternal Family Member of Lot 9

LOT 9 NELLS GLOW MR T AMY SPRINGHILL USA000068032717

Born: 04-05-2013 Tag # 311
Breeder: NELSON DENNIS E
HILMAR CA 95324
Owner: SPRINGHILL
CHRIS LANG
BIG PRAIRIE OH
330-473-9660

Bred 10-11-14 Due 7-20-15
Villa Crest Advance 68012836 31GU617

PA: +32M +0.00% +2F +0.03% +6P +31CM\$ +23NM\$
+0.2PTAT +0.2UDC -0.9FLC -0.6DPR +0.4PL +10PTI
ST SR BD DF RA TW RV RL FA
+0.8 +0.3 +0.7 +0.6 L0.6 +0.7 S0.1 S0.3 L0.5
FU RH RW UC UD TP TL
+0.5 +1.2 +0.7 -0.5 S0.1 W0.3 +0.5

LANG HAVEN DECISIONS NATURAL USA000000604878 7GU412

12/14 USDA PTA -190M -0.02% -11F +0.06% +4P
-0.4DPR +1.0PL -9NM\$ 25NM%ile +7CM\$ 93% Rel
AGA 12/14 PTAT +0.5 +0.3UDC -0.9FLC 93%Rel PTI +0

GR-LANG HAVEN SILVERADO TANGO USA000068013269

Appraisal: 90 @ 4-03 (91/86) Gold Star Dam - 2009
3-09 365D 2X 28740M 4.9% 1418F 3.8% 1085P* DHIA

NELLS GLOW CHALLENGE EMMET USA000068018600

LANG HAVEN NATURAL MR T USA000068045281 14GU321

PA: +58M +0.03% +8F +0.06% +11P +172CM\$ +153NM\$
+0.5PTAT +0.6UDC -0.3FLC -0.4DPR +2.7PL +53PTI
ST SR BD DF RA TW RV RL FA
+1.8 +0.8 +1.0 +0.1 H0.2 +0.9 H0.3 S0.2 L0.5
FU RH RW UC UD TP TL
+1.2 +1.4 +0.4 -0.9 S1.3 W0.3 +0.4

BULINS HILLPOINT AMSTEL-ET USA000068007292

3rd Dam: KNAPPS ENHANCER ADELINE-ET USA000003057366

Appraisal: 90 @ 3-06
4-03 365D 2X 36100M*5.4% 1943F*3.1% 1115P DHIA

4th Dam: KNAPPS MAGIC ADELINA-ET USA000003040838

Appraisal: 87 @ 3-06
1-10 365D 2X 24530M*4.1% 1006F 3.4% 837P* DHIA

5th Dam: KNAPPS ANDY ANDRESS USA000002963100

Appraisal: 90 @ 3-02
5-00 365D 2X 24580M 4.0% 993F 3.2% 787P DHIA

6th Dam: PINEBREEZE TELESTAR ANDORA USA000002891647

Appraisal: 95 @ 8-05
6-05 365D 2X 26740M 4.7% 1261F 3.0% 811P DHIA

2377D 156195M 4.5% 6976F 3.4% 5254P LIFE
Reserve All-American 3-year-old 1988
1st 3-year-old NGS-Madison 1988

7th Dam: MARFRED KH AGATHA USA000002853739

Appraisal: 91 @ 3-07
2-01 365D 2X 15890M 3.7% 591F 3.1% 499P DHIA

3-03 305D 2X 17850M 4.0% 721F 3.3% 582P DHIR

8th Dam: MARFRED TN AGNES USA000002816831

Appraisal: 91 @ 3-06
7-00 360D 2X 14180M 5.0% 713F 3.6% 508P DHIA

NELLS GLOW EMMET AMY USA000068044687

12/14 USDA PTA +6M -0.03% -5F +0.00% +0P
-0.8DPR -1.9PL -108NM\$ 16NM%ile -110CM\$ 40% Rel
2 App 12/14 PTAT -0.2 -0.3UDR -1.5FLC 42%Rel CPI -39
Appraisal: 77 @ 3-11 (74/77)
ST SR BD DF RA TW RV RL FA FU RH RW UC UD TP TL
34 34 33 36 34 34 27 37 17 18 37 43 21 6 17 35
2-03 365D 2X 23030M 4.7% 1086F 3.4% 791P DHIA
3-10 310D 2X 18960M 4.4% 830F 3.4% 652P 102

LOT 10 DOGWOOD LANE LEOS CHRISTA USA000078001060

Born: 12-02-2013 Tattoo LE LD15
Breeder: MYERS JOHN H JR & KATHY A
WORTON MD
Owner: MOSER DARLENE
PLEASANT LAKE IN
260-665-7719

Selling Open

SPRING WALK ICY ICEBERG-ET USA000068001358 1GU433

12/14 USDA PTA +600M +0.01% +28F +0.03% +25P
+1.4DPR -2.5PL +100NM\$ 41NM%ile +110CM\$ 88% Rel
AGA 12/14 PTAT -0.8 -1.5UDC +1.3FLC 79%Rel PTI +69

PA: -284M +0.02% -10F +0.02% -7P +64CM\$ +53NM\$
-1.1PTAT -0.4UDC -0.9FLC +2.4DPR +1.7PL -33PTI
ST SR BD DF RA TW RV RL FA
-1.3 -0.5 -0.5 -1.1 H1.1 -0.5 S0.3 S0.4 L0.3
FU RH RW UC UD TP TL
-0.1 -0.9 -1.1 -0.5 S0.2 W0.4 +0.4

DOGWOOD LANE SULLYS LINDA USA000003069970

Appraisal: 90 @ 9-10 (89/87)
6-00 365D 2X 18890M 4.3% 805F 3.4% 638P 95

DOGWOOD LANE RUBYS REX USA000000604792

12/14 USDA PTA -371M +0.04% -10F +0.03% -8P
+3.1DPR +2.1PL +77NM\$ 37NM%ile +92CM\$ 73% Rel
AGA 12/14 PTAT -0.4 +0.2UDC -0.7FLC 72%Rel PTI -10

DOGWOOD LANE ICE LEO-ET USA000068046354

PA: +223M -0.03% +6F +0.00% +8P +77CM\$ +74NM\$
-0.9PTAT -0.7UDC -0.1FLC +1.9DPR +0.0PL +15PTI
ST SR BD DF RA TW RV RL FA
-0.7 -0.3 +0.2 +0.2 H2.0 +0.2 0.0 S0.7 S0.1
FU RH RW UC UD TP TL
-0.2 -0.3 -0.2 -0.8 D0.5 W1.1 +1.0

CEDAR FRINGED CHRISSIE USA000003046395

12/14 USDA PTA -1333M +0.11% -44F +0.01% -42P
+2.4DPR +0.6PL -210NM\$ 5NM%ile -202CM\$ 49% Rel
4 App 12/14 PTAT -1.9 -0.4UDR -0.6FLC 56%Rel CPI -153
Appraisal: 86 @ 10-05 (84/85)

DOGWOOD LANE REX CHRISTINE USA000068004918

12/14 USDA PTA -790M +0.07% -25F +0.03% -21P
+2.8DPR +3.3PL +32NM\$ 53NM%ile +50CM\$ 45% Rel
3 App 12/14 PTAT -1.3 +0.0UDR -1.6FLC 51%Rel CPI -75
Appraisal: 84 @ 6-03 (86/76)
ST SR BD DF RA TW RV RL FA FU RH RW UC UD TP TL
17 18 23 22 27 14 17 29 16 23 33 30 32 23 27 29
2-03 305D 2X 9270M 4.6% 426F 3.5% 327P 96
3-06 305D 2X 10690M 4.5% 482F 3.7% 392P 98
4-07 305D 2X 12480M 4.1% 511F 3.7% 460P 92
6-00 286D 2X 15350M 4.0% 618F 3.5% 541P 95
6-10 305D 2X 15420M 4.8% 747F 3.6% 554P 95
8-08 305D 2X 16480M 4.1% 674F 3.3% 542P 97
DOGWOOD LANE REGGIES CARLIE 82 @ 3-00 (82/81)

2-00 365D 2X 11760M 5.1% 603F 3.7% 437P DHIA

3-06 365D 2X 15140M 5.1% 779F 3.6% 546P DHIA

4-11 359D 2X 15500M 4.9% 760F 3.5% 547P DHIA

6-01 350D 2X 14460M 5.1% 735F 3.4% 495P 94

7-03 365D 2X 16080M 5.1% 820F 3.7% 596P 94

8-07 365D 2X 16090M 4.8% 774F 3.4% 545P 95

9-10 261D 2X 9430M 4.4% 411F 3.4% 324P 92

2760D 106690M 5.0% 5337F 3.6% 3813P LIFE

DOGWOOD LANE BENS CHRISTIANA 85 @ 8-04 (82/82)

3-11 365D 2X 11770M 5.1% 595F 3.7% 431P 92

DOGWOOD LANE BENS CARMIN 84 @ 5-05 (85/83)

3-09 364D 2X 13690M 6.0% 818F 4.1% 565P 94

DOGWOOD LANE HERCULES CHAOS 85 @ 2-10 (85/80)

LOT 11 SPRINGHILL JUDGMENT PERFECTA USA000068034273

Born: 12-02-2014 Tag # 426
Breeder & Owner: SPRINGHILL
CHRIS LANG
BIG PRAIRIE OH
330-473-9660

Selling Open

SNIDERS OPTION AARON-ET USA000000604670 7GU395

12/14 USDA PTA +288M +0.17% +41F +0.00% +9P
-2.9DPR -0.5PL +159NM\$ 62NM%ile +163CM\$ 98% Rel
AGA 12/14 PTAT +1.4 +1.3UDC +2.2FLC 97%Rel PTI +96

PA: -305M +0.11% +3F +0.02% -7P +43CM\$ +35NM\$
+0.9PTAT +1.2UDC +2.0FLC -0.7DPR +0.5PL +30PTI
ST SR BD DF RA TW RV RL FA
+0.8 +0.3 +0.1 +0.3 H0.6 -0.2 H0.7 P0.6 S0.7
FU RH RW UC UD TP TL
+1.0 +0.5 +0.3 +0.6 S1.4 C1.5 -0.4

DIX LEE TILLER JOKE USA000068001932

Appraisal: 93 @ 5-08 (93/92)
5-06 365D 2X 31350M 4.9% 1543F 3.3% 1033P DHIA

SPRINGHILL JUDGMENT-ET USA000068030403 200GU118

12/14 USDA PTA -384M +0.22% +18F +0.03% -7P
-0.9DPR +1.3PL +121NM\$ 50NM%ile +132CM\$ 81% Rel
AGA 12/14 PTAT +1.4 +1.8UDC +2.2FLC 74%Rel PTI +62
ST SR BD DF RA TW RV RL FA
+0.2 +0.2 -0.3 +0.7 H1.3 -0.2 H0.5 P0.8 S0.9
FU RH RW UC UD TP TL
+1.2 +1.1 +1.1 +1.4 S1.5 C2.6 -1.0

INDIAN ACRES PHOENIX-ET USA000068029884 200GU306

OAKLAND CAESARS PANSY USA000068041991

12/14 USDA PTA -408M +0.00% -19F +0.03% -8P
+0.4DPR +1.9PL +16NM\$ 48NM%ile +28CM\$ 47% Rel
1 App 12/14 PTAT -0.3 +0.4UDR +1.8FLC 44%Rel CPI -12
Appraisal: 82 @ 2-10 (82/84)
2-02 365D 2X 16480M 4.6% 753F 3.5% 570P DHIA

OAKLAND PERFECTA OF SPRINGHILL USA000068031557

2-02 305D 2X 14523M 4.3% 625F 3.4% 488P Proj ME

3rd Dam: OAKLAND CHALLENGES POSEY USA000068023491

Appraisal: 80 @ 4-07 (80/82)
4-02 312D 2X 14610M 5.1% 740F 3.8% 559P 98

4th Dam: OAKLAND LOGIC PRIMROSE USA000068011490

Appraisal: 82 @ 3-08 (82/76)
2-00 326D 2X 14010M 3.8% 534F 3.5% 496P DHIA

LOT 12 FISH CREEK SILVER NORM SNICKERS USA000078001027

Born: 10-20-2013 Tattoo LE F274 RE F274
Breeder & Owner: FISH CREEK-DAR MOSER & TOM HOOVER
PLEASANT LAKE IN
260-665-7719

Bred 1-27-15 Due 11-5-15
Sniders Ronalds Alstar 604761 7GU398

PA: -305M +0.09% +1F +0.02% -7P -96CM\$ -103NM\$
+0.3PTAT +0.2UDC -1.1FLC -1.5DPR -1.6PL -32PTI
ST SR BD DF RA TW RV RL FA
+1.2 +0.9 +0.8 -0.7 L0.4 +0.8 S0.3 S1.0 L0.3
FU RH RW UC UD TP TL
+0.1 -0.6 -0.7 +0.2 S0.7 C0.2 +0.3

LANG HAVEN SILVER NORM-ET USA000068029027

PA: -164M +0.13% +13F +0.00% -6P -167CM\$ -166NM\$
+0.8PTAT +0.0UDC -0.3FLC -3.6DPR -3.4PL -21PTI
ST SR BD DF RA TW RV RL FA
+2.1 +2.0 +2.2 +0.7 L0.3 +2.3 H0.1 S0.6 L0.1
FU RH RW UC UD TP TL
-0.1 +0.3 +0.6 +0.2 D0.5 C0.1 +0.8

HARTDALE FC ACE LUTHER SAGE USA000068025821

12/14 USDA PTA -446M +0.05% -12F +0.04% -8P
+0.6DPR +0.2PL -39NM\$ 32NM%ile -25CM\$ 38% Rel
1 App 12/14 PTAT -0.2 +0.4UDR -1.9FLC 39%Rel CPI -44
Appraisal: 78 @ 2-07 (78/76)
ST SR BD DF RA TW RV RL FA FU RH RW UC UD TP TL
34 26 16 14 28 27 30 34 22 29 29 11 23 48 31 21

COULEE CREST R O SILVERADO-ET USA00000604520 200GU110

12/14 USDA PTA -600M +0.18% +2F +0.00% -20P
-5.4DPR -2.9PL -260NM\$ 8NM%ile -260CM\$ 95% Rel
AGA 12/14 PTAT +0.7 +0.3UDC -0.1FLC 93%Rel PTI -64

LANG HAVEN TILLER NEXUS-ET USA000068009178

Appraisal: 86 @ 2-11 (86/83)
2-03 346D 2X 22380M 6.2% 1379F 3.3% 740P DHIA

LAND OF LIVING ACE LUTHER-ET USA000068004651 31GU615

12/14 USDA PTA -527M -0.01% -25F +0.04% -11P
+1.6DPR +1.8PL +20NM\$ 29NM%ile +45CM\$ 81% Rel
AGA 12/14 PTAT -0.2 +0.3UDC -1.1FLC 67%Rel PTI -45

TWIN MAPLE DEEMAND STACY USA000068015834

1 App 12/14 PTAT +0.1 +0.2UDR -1.4FLC 43%Rel
Appraisal: 86 @ 5-04 (86/83)

LOT 13 NELLS GLOW MARIAN SPRINGHILL USA000068032727

Born: 04-30-2013 Tag # 321
Breeder: NELSON DENNIS E
HILMAR CA
Owner: SPRINGHILL
CHRIS LANG
BIG PRAIRIE OH
330-473-9660

Bred 9-8-14 Due 6-17-15
Edgewater Meadows Yogibear-ET 604917 7GU402

PA: +216M +0.02% +13F -0.01% +6P +39CM\$ +38NM\$
+0.1PTAT +0.1UDC -0.6FLC -0.3DPR -0.7PL +19PTI
ST SR BD DF RA TW RV RL FA
+0.8 +0.4 +0.5 +1.0 L2.0 +0.2 S0.4 P0.1 L0.1
FU RH RW UC UD TP TL
-1.1 +1.1 +0.9 +1.4 D0.9 W0.5 +0.2

JENS GOLD C BLUE SPRUCE-ET USA000068012543 1GU436

12/14 USDA PTA -3M +0.06% +10F +0.00% +0P
-0.2DPR -0.5PL +19NM\$ 29NM%ile +21CM\$ 93% Rel
AGA 12/14 PTAT +1.0 +0.7UDC +0.6FLC 91%Rel PTI +35
ST SR BD DF RA TW RV RL FA
+2.0 +1.0 +1.3 +1.8 L2.3 +0.5 H0.2 P0.6 S0.1
FU RH RW UC UD TP TL
-1.0 +2.6 +2.1 +2.4 D0.9 W0.1 +0.4

NELLS GLOW MAXIE MARIAN USA000068026211

12/14 USDA PTA +435M -0.02% +16F -0.01% +12P
-0.4DPR -0.8PL +56NM\$ 60NM%ile +56CM\$ 50% Rel
1 App 12/14 PTAT -0.8 -0.6UDR -1.7FLC 45%Rel CPI +4
Appraisal: 79 @ 2-06 (82/80)
ST SR BD DF RA TW RV RL FA FU RH RW UC UD TP TL
25 32 26 14 29 25 34 36 23 29 33 21 22 27 23 18
2-03 337D 2X 23060M 4.7% 1075F 3.4% 776P 101
3-04 348D 2X 23690M 4.5% 1075F 3.3% 785P 102
4-06 335D 2X 24800M 4.6% 1138F 3.4% 837P 80

IDLE GOLD E CHALLENGE-ET USA00000604268 1GU418

12/14 USDA PTA -437M +0.17% +8F +0.10% +2P
+1.5DPR +1.5PL +152NM\$ 62NM%ile +183CM\$ 98% Rel
AGA 12/14 PTAT +0.1 +0.3UDC +0.9FLC 97%Rel PTI +33

JENS GOLD ROYAL OAK Z SPRUCE USA000003052204

Appraisal: 92 @ 6-01 (91/91) Gold Star Dam - 2002
6-11 365D 2X 22780M 4.7% 1073F 3.2% 736P DHIA

MARFRED MAXIE-ET USA00000603635 54GU440

12/14 USDA PTA +429M -0.06% +10F -0.04% +8P
-3.4DPR -2.8PL -81NM\$ 16NM%ile -88CM\$ 94% Rel
AGA 12/14 PTAT -0.6 +0.3UDC -3.7FLC 93%Rel PTI -46

NELLS GLOW FORTRESS MARTINA USA000068011171

12/14 USDA PTA +389M -0.10% +0F +0.02% +16P
+2.2DPR +0.9PL +107NM\$ 74NM%ile +117CM\$ 52% Rel
2 Rec YDev: +1312M +122F +81P
1 App 12/14 PTAT -1.0 -1.6UDR +0.6FLC 49%Rel CPI +28
Appraisal: 75 @ 2-08 (76/77)
2-04 348D 2X 21410M 4.1% 873F 3.3% 716P DHIA

LOT 14 HEATH DOUBLE L KARMEL**USA000078000142**

Born: 09-06-2013 Tattoo LE GD31
 Breeder: HEATH DALE V
 JANESVILLE WI
 Owner: MATHEWS MAGGIE
 NEW VIENNA OH

Selling Open

1st Fall Calf Ohio Spring Dairy Expo Junior Show 2014
 3rd Fall Calf Ohio Spring Dairy Expo Open Show 2014

PINE RIDGE DOUBLE L-ET USA000000604312 200GU109

12/14 USDA PTA -71M +0.16% +24F -0.02% -6P
 +0.0DPR +4.5PL +286NM\$ 91NM%ile +288CM\$ 92% Rel
 AGA 12/14 PTAT +1.2 +1.8UDC -0.5FLC 86%Rel PTI +52
 ST SR BD DF RA TW RV RL FA
 -3.8 -2.1 -1.6 +0.1 H3.8 -1.5 H0.3 S0.3 L0.5
 FU RH RW UC UD TP TL
 +2.4 +1.0 +0.6 +0.5 S1.9 C1.9 -2.4

HEATH LYNDON KARLY USA000068029948

12/14 USDA PTA +316M -0.20% -20F -0.09% -4P
 +0.5DPR +1.9PL +0NM\$ 43NM%ile -20CM\$ 44% Rel

3rd Dam: KNAPPS MR AMERICA KAREN USA0000003079942

Appraisal: 86 @ 4-10 (84/85)
 2-03 365D 2X 26730M 4.5% 1200F 3.1% 835P DHIA

4th Dam: KNAPPS SHARP KARRESS USA0000003070875

Appraisal: 91 @ 3-02 (92/90)
 6-07 306D 2X 17800M 4.5% 803F 3.2% 574P 97

TROTACRE JAY MR LUXURY-ET USA000000602751 7GU339

12/14 USDA PTA +559M -0.14% +2F -0.02% +14P
 +1.8DPR +0.1PL +54NM\$ 33NM%ile +40CM\$ 97% Rel
 AGA 12/14 PTAT +0.2 -0.3UDC -0.5FLC 96%Rel PTI +33

PINE RIDGE PERFECTO LUXURY-ET USA0000003032261

Appraisal: 90 @ 5-10 Gold Star Dam - 1999
 4-02 365D 2X 27050M 5.1% 1380F*3.6% 976P DHIA

UP THE CREEK NEON LYNDON USA000068008482 14GU308

12/14 USDA PTA +1059M -0.40% -23F -0.12% +14P
 +0.3DPR +1.2PL +3NM\$ 29NM%ile -31CM\$ 85% Rel
 AGA 12/14 PTAT +0.3 +0.1UDC +0.5FLC 80%Rel PTI +20

KNAPPS CASTRO KAREN USA000068006311

12/14 USDA PTA -324M +0.03% -9F -0.01% -12P
 +0.9DPR +2.4PL +53NM\$ 59NM%ile +57CM\$ 46% Rel
 5-01 294D 2X 13270M 5.8% 765F 3.0% 404P 93
 HEATH KAPTAIN SPRITE 80 @ 2-10 (81/78)
 3-05 305D 2X 17170M 4.9% 847F 3.4% 576P 96

LOT 15 MARIAHS POPEYE ELLA**USA000078003873**

Born: 05-06-2014 Tattoo LE D19
 Breeder & Owner: DICKE ROLAND W & FAMILY
 NEW BREMEN OH
 419-629-3518

Selling Open

WELCOME HILLPOINT N POPEYE-ET USA000068028391 7GU443

12/14 USDA PTA -29M +0.00% -2F +0.01% +0P
 -0.9DPR -0.7PL -68NM\$ 20NM%ile -67CM\$ 62% Rel
 AGA 12/14 PTAT +0.1 +0.0UDC -0.7FLC 53%Rel PTI -13
 ST SR BD DF RA TW RV RL FA
 +1.5 +0.9 +1.6 +0.1 L0.1 +1.2 0.0 S0.4 L0.4
 FU RH RW UC UD TP TL
 +0.6 +0.6 +0.3 -0.4 S0.4 W0.9 +1.4

MARIAHS GRUMPY ELLEN USA000068046802

12/14 USDA PTA -256M +0.03% -6F +0.03% -4P
 +1.3DPR -1.0PL -10NM\$ 40NM%ile -2CM\$ 44% Rel
 1-10 311D 2X 9000M 4.2% 380F 3.2% 286P 93

LANG HAVEN DECISIONS NATURAL USA000000604878 7GU412

12/14 USDA PTA -190M -0.02% -11F +0.06% +4P
 -0.4DPR +1.0PL -9NM\$ 25NM%ile +7CM\$ 93% Rel
 AGA 12/14 PTAT +0.5 +0.3UDC -0.9FLC 93%Rel PTI +0

TRI HAVEN TILLER PIPPY USA000068005370

Appraisal: 89 @ 3-02 (90/86)
 2-03 305D 2X 24280M 5.0% 1225F 3.1% 748P 86

GOLDEN J RONALD GRUMPY USA000000604960 7GU405

12/14 USDA PTA -53M +0.13% +19F +0.06% +8P
 +1.2DPR +3.6PL +268NM\$ 87NM%ile +287CM\$ 94% Rel
 AGA 12/14 PTAT +0.2 +1.2UDC +0.0FLC 94%Rel PTI +69

CLEARVIEW CREEK ELLA USA000068025943

12/14 USDA PTA -628M +0.06% -19F +0.02% -17P
 +2.7DPR -3.5PL -173NM\$ 8NM%ile -167CM\$ 38% Rel
 2-09 305D 2X 10030M 5.3% 535F 3.5% 347P 97
 MARIAHS TURLEY EVE 77 @ 2-02 (78/80)



Walnut Ridge Russ Nope R EX-93

Walnut Ridge Perfect Nope EX-90

122,160M 5.9% 7,249F 3.6% 4,354P Lifetime
Dam of Lot 16

169,410M 4.5% 7,664F 3.3% 5,663P Lifetime
Dam of Lot 16

LOT 16 4 IVF NOPE R OR NOPE EMBRYOS

WALNUT RIDGE RUSS NOPE R USA000068010327

Born: 03-02-2006 Tattoo LE A06 RE A06
Breeder & Owner: WALNUT RIDGE FARM
MIDDLETOWN MD
Pam Moser - 240-367-7568

Selling 4 IVF embryos. Buyer may choose any combination of the following:
2 Sniders Option Aaron x Russ Nope R
2 Sniders Magicman Kash x Russ Nope R
2 Mar Ral Royal Mentor x Perfect Nope
2 Sniders Magicman Kash x Perfect Nope

The pedigree printed is that of Nope R. She is a daughter of Nope. Buyer is responsible for the cost and liability of shipping from TransOva in Hagerstown, MD

12/14 USDA PTA -490M +0.14% +0F +0.05% -9P
+0.5DPR +1.8PL +37NM\$ 54NM%ile +49CM\$ 47% Rel
5 App 12/14 PTAT +1.0 +0.8UDR +0.2FLC 56%Rel CPI +16
Appraisal: 93 @ 6-08 (91/94)
ST SR BD DF RA TW RV RL FA FU RH RW UC UD TP TL
50 24 38 36 37 35 34 27 31 19 36 37 32 22 33 28
2-00 365D 2X 18900M 4.9% 934F 3.5% 659P DHIA
3-06 365D 2X 21210M 6.0% 1270F 3.5% 733P 97
4-11 365D 2X 18280M 6.5% 1186F 3.9% 713P 92
6-05 312D 2X 23020M 6.3% 1455F 3.1% 725P 95
7-04 365D 2X 21540M 5.7% 1228F 3.5% 757P 96
2214D 122160M 5.9% 7249F 3.6% 4354P LIFE

Nope R Show Winnings:

Reserve Jr. All-American Aged Cow 2012
HM All-American Aged Cow 2012
Grand Champion NGS-Harrisburg 2012
1st Aged Cow NGS-Harrisburg 2012
1st Aged Cow NJS-Madison 2012
2nd Aged Cow NGS-Madison 2012
4th Jr. 2-year-old NJS-Harrisburg 2008

ALDENS RUSS USA000000604866 200GU112

12/14 USDA PTA -1019M +0.27% -4F +0.10% -17P
-2.7DPR -4.3PL -286NM\$ 4NM%ile -266CM\$ 86% Rel
AGA 12/14 PTAT +0.3 -0.2UDC -1.2FLC 75%Rel PTI -80
ST SR BD DF RA TW RV RL FA
+1.5 +1.5 +1.5 +0.0 L2.7 +1.3 H0.3 S0.8 L0.4
FU RH RW UC UD TP TL
+0.3 +1.2 +0.2 -0.6 D0.2 W1.2 -0.1

JENSGOLDEN BIONIC OPTION USA000000602643 14GU273

12/14 USDA PTA -488M +0.12% -2F +0.03% -11P
-3.0DPR -5.9PL -299NM\$ 0NM%ile -293CM\$ 94% Rel
AGA 12/14 PTAT -1.0 -1.2UDC -0.4FLC 94%Rel PTI -96

ALDENS LORRY RIBBONS USA000003062605

Appraisal: 89 @ 4-03 (90/87)
4-01 365D 2X 22590M 4.3% 982F 3.3% 744P 100

WALNUT RIDGE PERFECT NOPE USA000003081798

12/14 USDA PTA -292M -0.02% -16F -0.01% -11P
+3.8DPR +5.8PL +171NM\$ 86NM%ile +175CM\$ 58% Rel
3 App 12/14 PTAT +0.2 +0.5UDR +0.0FLC 61%Rel CPI +11
Appraisal: 90 @ 7-08 (87/90)
ST SR BD DF RA TW RV RL FA FU RH RW UC UD TP TL
31 28 33 32 20 24 36 22 31 25 26 23 36 18 18 26
2-01 300D 2X 16530M 5.3% 878F 3.2% 528P 91
3-01 316D 2X 19960M 4.8% 967F 3.2% 642P 92
4-01 306D 2X 18500M 4.0% 745F 3.3% 611P 93
5-01 330D 2X 17090M 4.2% 715F 3.4% 578P 95
6-02 331D 2X 19860M 4.4% 872F 3.5% 691P 95
7-02 280D 2X 18870M 4.9% 924F 3.3% 623P 94
8-01 365D 2X 23140M 4.5% 1046F 3.3% 767P 93
9-04 321D 2X 17930M 4.3% 776F 3.4% 616P 94
10-07 347D 2X 15730M 4.1% 640F 3.4% 534P 95
2931D 169410M 4.5% 7664F 3.3% 5663P LIFE

LILY LANE PENNY PERFECTO-ET USA000000598133 1GU296

12/14 USDA PTA -564M -0.05% -33F +0.03% -14P
+0.6DPR +2.5PL -31NM\$ 20NM%ile -14CM\$ 99% Rel
AGA 12/14 PTAT +0.1 +0.0UDC +1.1FLC 99%Rel PTI -38

WALNUT RIDGE METALLICA NONE YA USA000003064430

12/14 USDA PTA -420M +0.04% -12F -0.01% -16P
+4.2DPR +1.8PL +4NM\$ 44NM%ile +0CM\$ 45% Rel
2 App 12/14 PTAT -1.3 -1.1UDR +0.1FLC 57%Rel CPI -42
Appraisal: 88 @ 5-07 (90/86)
2-01 305D 2X 15920M 4.6% 739F 3.5% 558P DHIA
3-01 325D 2X 20440M 5.3% 1089F 3.4% 701P 90
4-02 256D 2X 16420M 4.5% 744F 3.1% 516P 86
5-02 274D 2X 17810M 4.8% 852F 3.1% 556P 88
6-00 284D 2X 16410M 5.6% 923F 3.3% 548P 88
7-00 295D 2X 13670M 4.6% 630F 3.3% 453P 92
8-00 292D 2X 11420M 5.0% 568F 3.2% 370P 92
2031D 112090M 4.9% 5545F 3.3% 3702P LIFE
WALNUT RIDGE MONTE NOAH PTI +8
WALNUT RIDGE YOGI NOVANA 88 @ 6-03 (88/81)
6-09 332D 2X 26630M 5.9% 1577F 3.3% 890P 95

HM Jr. All-American 4-year-old 2007

WALNUT RIDGE FRANK NIFTY 90 @ 5-07 (90/87)
4-11 363D 2X 23550M 5.0% 1189F 3.2% 760P 96
WALNUT RIDGE MAGIC NOVA 86 @ 3-03 (87/85)
3-01 295D 2X 16550M 4.9% 814F 3.1% 518P 95

3rd Dam: WALNUT RIDGE GONZO NO NAME USA000003053649

Appraisal: 84 @ 4-03
4-11 319D 2X 21480M 5.1% 1097F 3.4% 732P DHIA

The following semen will be selling with the proceeds going to support the 2015 National Convention Fund. All semen will be present at the sale. The buyer is responsible for cost and liability of shipping after the sale.

LOT S1 10 UNITS OF SNIDERS OPTION AARON-ET USA000000604670 7GU395
Donated by Select Sires Inc., Plain City, OH

LOT S2 10 UNITS OF SNIDERS OPTION AARON-ET USA000000604670 7GU395
Donated by Select Sires Inc., Plain City, OH

LOT S3 8 UNITS OF SNIDERS DEEMAND ADACKA-ET USA000068003052 76GU805
Donated by Brad Goodman & Family, Lima, OH

LOT S4 3 UNITS OF SNIDERS DEEMAND ADACKA-ET USA000068003052 76GU805
Donated by Brad Goodman & Family, Lima, OH

The following lots are all donated by Mike Landers, Tiffin, OH

LOT S5 8 UNITS OF SPRING WALK B T FRANK USA000000596414 1GU167
10 UNITS OF SPRING WALK KARIS TRUMPET USA000000601647 1GU368

LOT S6 2 UNITS OF OLYMPIC VIEW F BILLBOARD-ET USA000000599229 72GU331
10 UNITS OF FUTURISTIC FRANK SENTRY-ET USA000000601029 1GU343
10 UNITS OF SPRING WALK KARIS TRUMPET USA000000601647 1GU368

LOT S7 10 UNITS OF LILY LANE T PENNY PENSION-ET USA000000601295 1GU355
10 UNITS OF JENSGOLDEN PERFECT HICKORY-ET USA000000602213 1GU385
3 UNITS OF WILLOWS ADMIRAL JASPER USA000000598587 9GU109
1 UNIT OF JIMCO PANSYS FANCY-ET USA000000601359 1GU360

LOT S8 20 UNITS OF SPRING WALK KARIS TRUMPET USA000000601647 1GU368